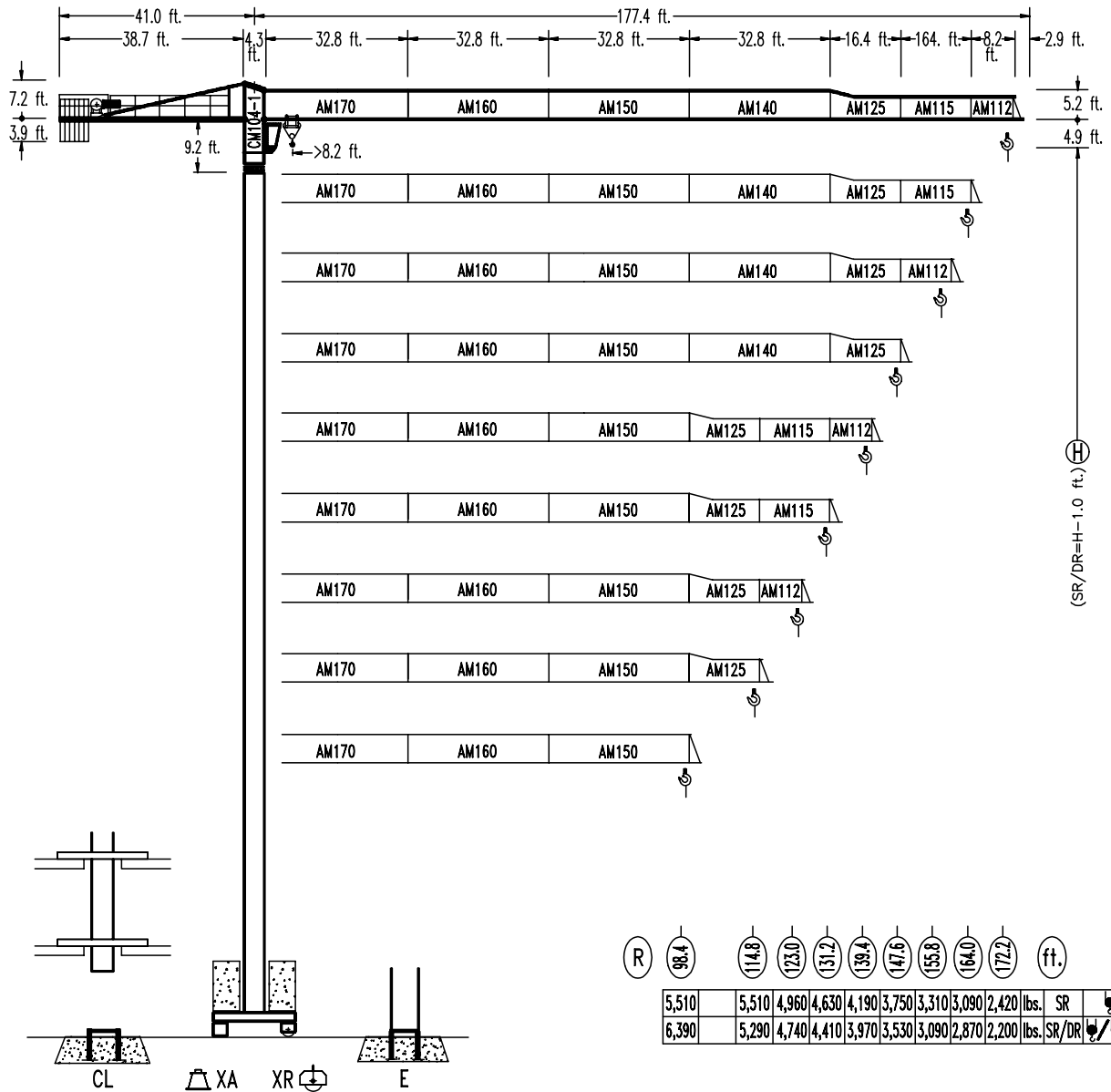




COMANSA

LC-5211

11,020 lbs.

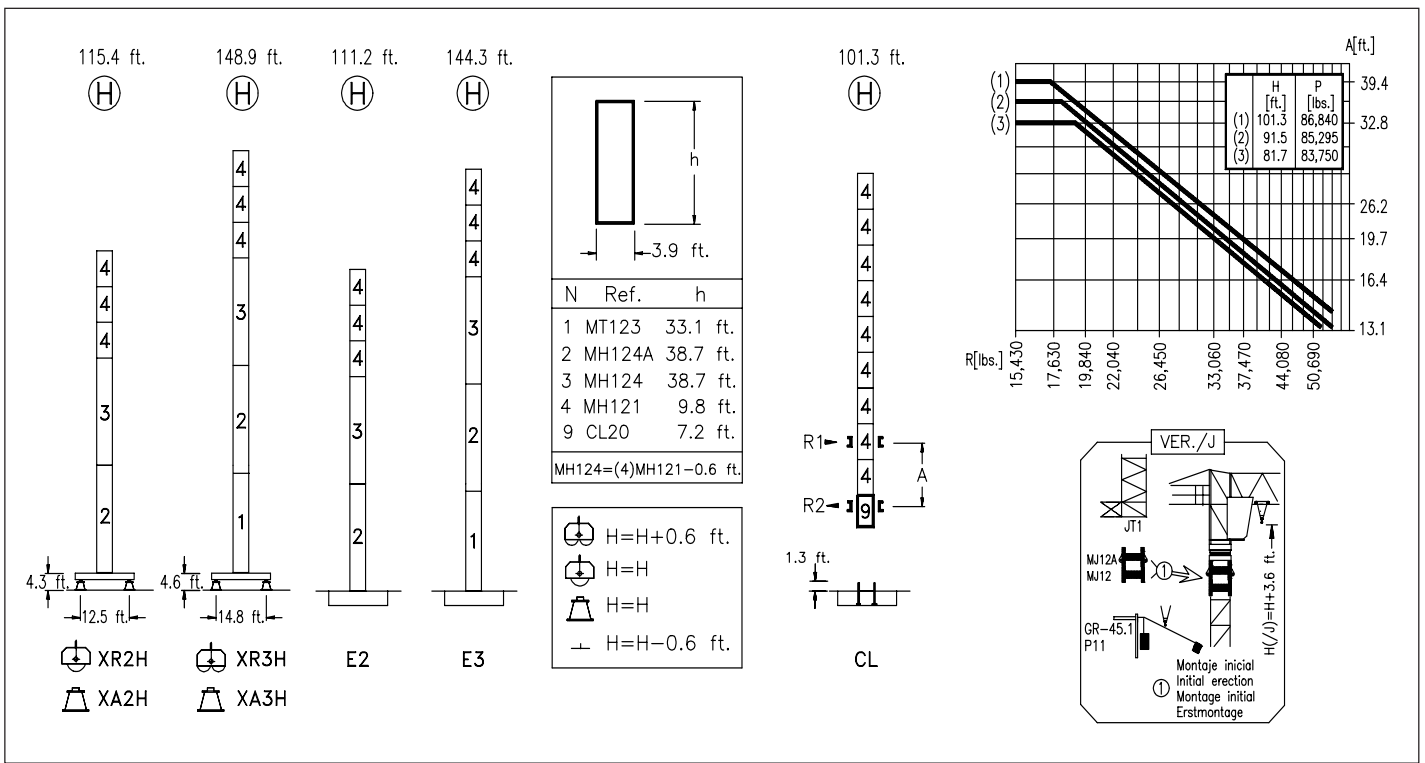


(R) 98.4 (114.8) (123.0) (131.2) (139.4) (147.6) (155.8) (164.0) (172.2) (ft.)

5,510	5,510	4,960	4,630	4,190	3,750	3,310	3,090	2,420	lbs.	SR	☞
6,390	5,290	4,740	4,410	3,970	3,530	3,090	2,870	2,200	lbs.	SR/DR	☞☞☞

DIN 15018 H1 B3

(R)	R(Cmax)	Cmax	65.6	82.0	98.4	114.8	123.0	131.2	139.4	147.6	155.8	164.0	172.2	ft.
(172.2)	SR	87.9 ft.	5,510	5,510	5,510	4,830	4,010	3,700	3,420	3,170	2,950	2,750	2,580	2,420
	SR/DR	46.6 ft.	11,020	7,450	5,730	4,580	3,790	3,480	3,200	2,950	2,730	2,530	2,360	2,200
(164.0)	SR	101.0 ft.	5,510	5,510	5,510	5,510	4,740	4,360	4,060	3,770	3,500	3,280	3,090	
	SR/DR	53.5 ft.	11,020	8,730	6,740	5,540	4,520	4,140	3,830	3,550	3,280	3,060	2,870	
(155.8)	SR	101.4 ft.	5,510	5,510	5,510	5,510	4,760	4,390	4,080	3,790	3,530	3,310		
	SR/DR	53.5 ft.	11,020	8,770	6,790	5,470	4,540	4,170	3,860	3,570	3,310	3,090		
(147.6)	SR	106.3 ft.	5,510	5,510	5,510	5,510	5,050	4,650	4,320	4,010	3,750			
	SR/DR	56.1 ft.	11,020	9,260	7,160	5,800	4,830	4,430	4,100	3,790	3,530			
(139.4)	SR	110.2 ft.	5,510	5,510	5,510	5,510	5,240	4,850	4,500	4,190				
	SR/DR	58.4 ft.	11,020	9,650	7,470	6,040	5,020	4,630	4,280	3,970				
(131.2)	SR	112.8 ft.	5,510	5,510	5,510	5,510	5,400	4,980	4,630					
	SR/DR	59.7 ft.	11,020	9,920	7,690	6,210	5,180	4,760	4,410					
(123.0)	SR	112.2 ft.	5,510	5,510	5,510	5,510	5,380	4,960						
	SR/DR	59.4 ft.	11,020	9,850	7,650	6,170	5,160	4,740						
(114.8)	SR	114.8 ft.	5,510	5,510	5,510	5,510	5,510	5,510						
	SR/DR	60.7 ft.	11,020	10,090	7,850	6,350	5,290							
(98.4)	SR	98.4 ft.	5,510	5,510	5,510	5,510								
	SR/DR	61.0 ft.	11,020	10,160	7,890	6,390								



CS2-1.9
3 hp.
63 ft./min
189 ft./min

CFU-2.2
3 hp.
0 \varnothing 262 ft./min

GR-9.0
66 ft.lbs.
0 \varnothing 0,8 rpm

TS2-4.5 | **TS2-5.5**
2x33 ft.lbs. | 2x40 ft.lbs.
0 \varnothing 78 ft./min
XR2H | XR3H

820 ft.
ES3-18-12
29 hp.

		I	II	III
SR	ft./min	32	126	252
	lbs.	5,510	5,510	2,860
DR	ft./min	16	63	126
	lbs.	11,020	11,020	5,730

820 ft.
EFU2-18-12
24 hp.

SR Graph:

ft./min	lbs.
131.2	5,510
196.8	4,410
249.3	2,420

DR Graph:

ft./min	lbs.
65.6	11,020
98.4	8,820
124.6	4,850

Tensión de alimentación Operating voltage Tension de service Betriebsspannung	480 V 3 ph 60 Hz
--	---

Opcional Optional En option Kaufoption	*
---	----------

R. máx. En servicio In operation En service In Betrieb	XR2H 99,650 lbs. XR3H 144,620 lbs.
---	---

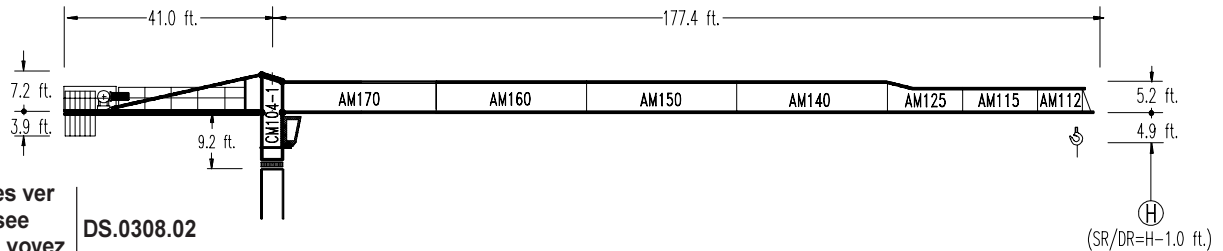
R. máx. Fuera de servicio Out of service Hors service Ausser Betrieb	XR2H 89,730 lbs. XR3H 101,630 lbs.
---	---



Construcciones Metálicas COMANSA S. A.
Polígono Industrial de Areta
E-31620 Huarte-Pamplona.- SPAIN
Tel.: (34) 948 335 020 - Fax: (34) 948 330 810
e-mail: info@comansa.com

LC-5211

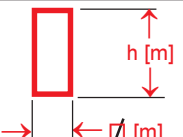
∅ 5.2 ft.



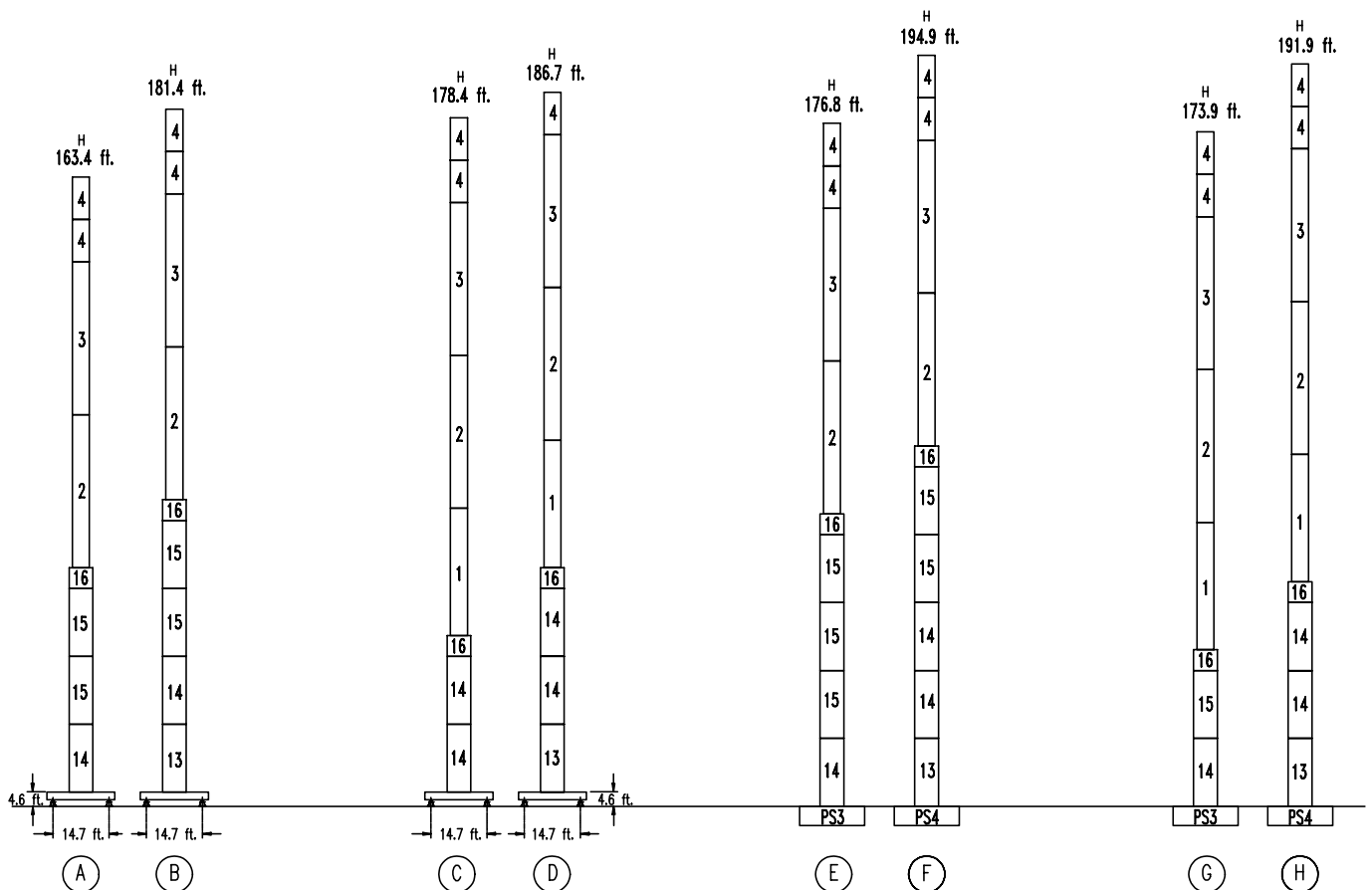
Configuraciones ver
Configuration see
Configurations voyez
Komponenten siehe

DS.0308.02

(SR/DR=H-1.0 ft.)

	n°	Ref.	∅	h	n°	Ref.	∅	h	n°	Ref.	∅	h
	1	MT123	3.9	33.1	10	S15	5.2	18.0	14	S13	5.2	18.0
2	MH124A	3.9	38.7	11	TS15	5.2	18.0	15	S12	5.2	18.0	
3	MH124	3.9	38.7	12	S14	5.2	18.0	16	TMS13	5.2	3.3	
4	MH121	3.9	9.7	13	TS14	5.2	18.0					

Configuraciones para grúa sin cabina.
Configuration for crane without cabin.
Configurations pour grue sans cabine.
Komponenten für Kran ohne Kabine.



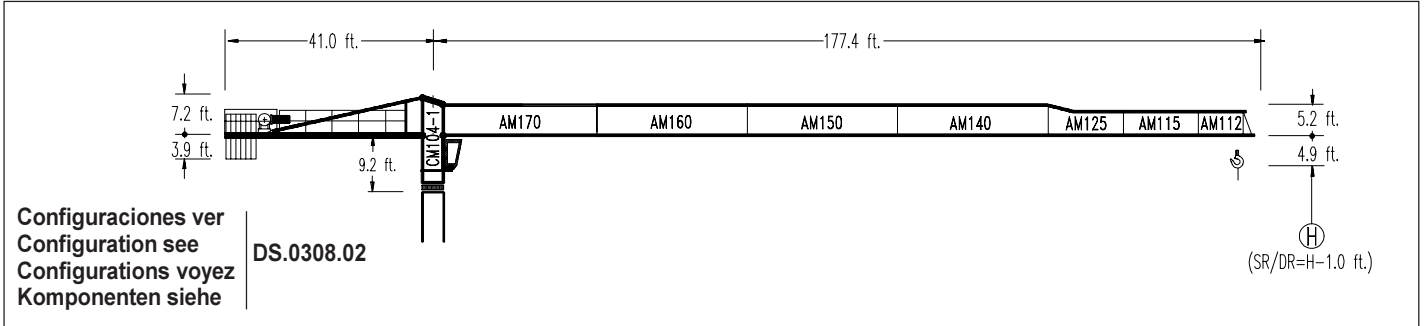


COMANSA

LINDEN 500

LC-5211

∅ 6.6 ft.



	n° Ref. ∅ h			n° Ref. ∅ h			n° Ref. ∅ h					
	→ [m] ←	1	MT123	3.9	33.1	10	S25	6.6	18.0	14	S23	6.6
	2	MH124A	3.9	38.7	11	TS25	6.6	18.0	15	S22	6.6	18.0
	3	MH124	3.9	38.7	12	S24	6.6	18.0	16	TMS23	6.6	3.3
	4	MH121	3.9	9.8	13	TS24	6.6	18.0				

Configuraciones para grúa sin cabina.
 Configuration for crane without cabin.
 Configurations pour grue sans cabine.
 Komponenten für Kran ohne Kabine.

